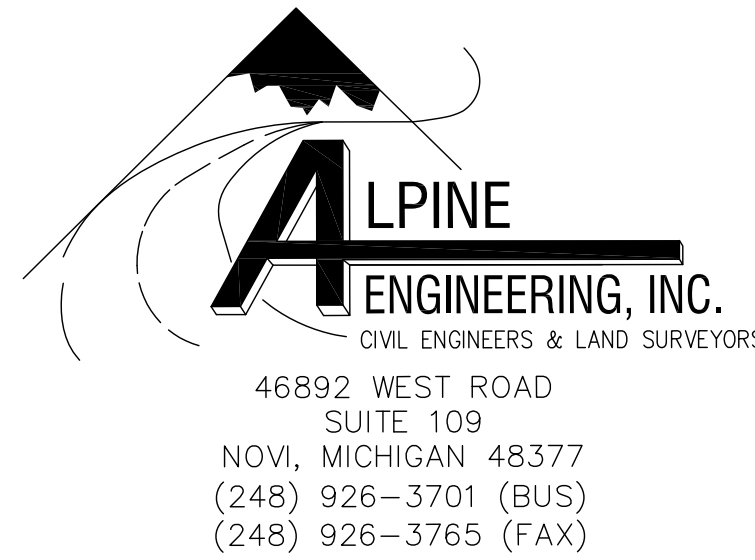


ROUGE RIVER AOC - HENRY FORD ESTATE DAM FISHWAY HABITAT RESTORATION PROJECT

WAYNE COUNTY, MICHIGAN
GLRI EPA AWARD NO. GL-00E02040-0

FOR BIDDING - OCTOBER, 2017
AS-BUILT
SEPTEMBER 2020



NOTE:
THESE SHEETS ARE A COPY OF THE DETAILED ENGINEERING PLANS AS PROVIDED BY THE PROJECT OWNER. THE SOLE PURPOSE OF THESE PLANS IS FOR ILLUSTRATION OF THE RESULTS OF AN AS-BUILT SURVEY OF THE UTILITY INFRASTRUCTURE AND ROADWAY AS COMPLETED BY ALPINE ENGINEERING, INC. ALPINE ENGINEERING, INC. ACKNOWLEDGES NO CONTROL OR RESPONSIBILITY FOR THE DESIGN OR CONSTRUCTION METHODS AS ILLUSTRATED ON THE ORIGINAL DESIGN PLAN. ANY QUESTIONS REGARDING THE DESIGN OF THIS PROJECT SHOULD BE DIRECTED TO THE OWNER AND/OR THE DESIGN ENGINEER LISTED ON THE ORIGINAL PLAN.
PROPOSED VALUES WITH LINE STRIKETHROUGH AND ADJACENT ELEVATIONS, SLOPES, AND DISTANCES ARE AS-BUILT FIELD MEASURED VALUES.
FIELD MEASUREMENTS WERE PERFORMED: 8/21/2020.
ALPINE ENGINEERING INC. JOB # 17-514

GINGER MICHALSKI-WALLACE
PROFESSIONAL SURVEYOR NO. 47964

PREPARED BY:

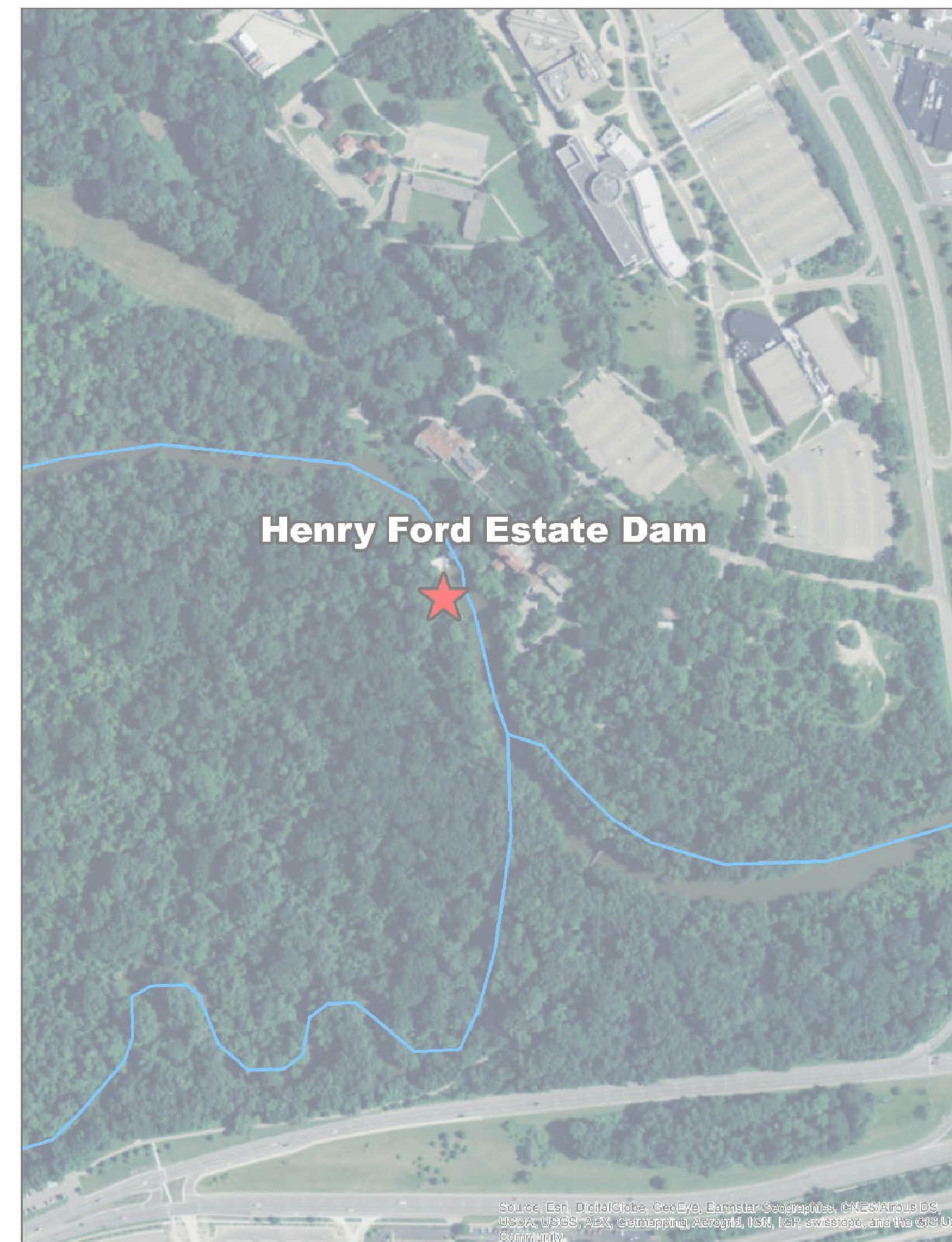


Environmental Consulting & Technology, Inc.
2200 Commonwealth Boulevard, Suite 300
Ann Arbor, Michigan 48106
Phone: 734.769.3004
Fax: 734.769.31664

WITH:



PROJECT LOCATION MAP
NOT TO SCALE



PROJECT VICINITY MAP
NOT TO SCALE

* DENOTES A SHEET THAT CONTAINS ASBUILT DATA
DRAWING INDEX

- * 1. COVER SHEET
- 2. EXISTING CONDITIONS - OVERVIEW
- 3. EXISTING CONDITIONS - FISHWAY PROJECT AREA
- 4. EXISTING CONDITIONS - ACCESS
- 5. SITE PREPARATION PLAN
- 6. TREE REMOVAL - FISHWAY
- 7. TREE REMOVAL - ACCESS
- 8. TEMPORARY ACCESS DETAILS
- 9. GRADING PLAN- OVERVIEW
- 10. GRADING- NORTH
- 11. GRADING- SOUTH
- 12. FISHWAY PROFILE
- 13. FISHWAY DETAILS
- 14. END DETAILS
- 15. REVEGETATION PLAN- OVERVIEW
- 16. REVEGETATION- NORTH
- 17. REVEGETATION- SOUTH
- 18. MISCELLANEOUS DETAILS
- 19. NOTES
- * GC1.1 BRIDGE SITE PLAN AND BRIDGE PROFILE VIEWS
- GC1.2 BRIDGE ELEVATION, PLAN, AND SECTION
- GC1.3 BRIDGE NORTH ABUTMENT AND WING WALL DETAILS
- GC1.4 BRIDGE SOUTH ABUTMENT AND WING WALL DETAILS
- GC1.5 BRIDGE ABUTMENT AND WING WALL DETAILS
- GC1.6 TYPICAL DETAILS
- GC1.7 SUBSURFACE INFORMATION, APPLICABLE PROJECT SPECIFICATIONS AND QUANTITIES
- GC1.8 VOLUME PLANS AND PROFILES
- * 1/5 AS-BUILT TOPOGRAPHIC SURVEY
- * 2/5 AS-BUILT TOPOGRAPHIC SURVEY
- * 3/5 AS-BUILT TOPOGRAPHIC SURVEY
- * 4/5 AS-BUILT TOPOGRAPHIC SURVEY
- * 5/5 AS-BUILT PROFILE