



Rouge River Watershed 2017 Winter Stonefly Search

www.therouge.org

Eighty-two volunteers participated in Friends of the Rouge's 2017 Winter Stonefly Search on January 21 on an unusually warm winter day where the temperatures reached 57 degrees. The University of Michigan-Dearborn's Environmental Interpretive Center hosted the event. Participating were three teams from Wayne State University, a group from Marygrove College, two new teams from Fordson High School, and one new team from Boy Scout Pack 854 and many other volunteers.

Stoneflies are sensitive indicators of healthy streams. Unlike other insects, winter stoneflies develop into adult flies in the winter. The Winter Stonefly Search is part of Friends of the Rouge volunteer benthic macroinvertebrate monitoring program.

A total of 31 sites were sampled. On January 21, ten teams sampled 20 sites. An additional five sites were sampled by Wayne County Department of Public Services Water Quality Management Division, one site on Bell Creek by Schoolcraft College students, and five sites on Johnson and Tonquish Creeks by Sue Thompson.

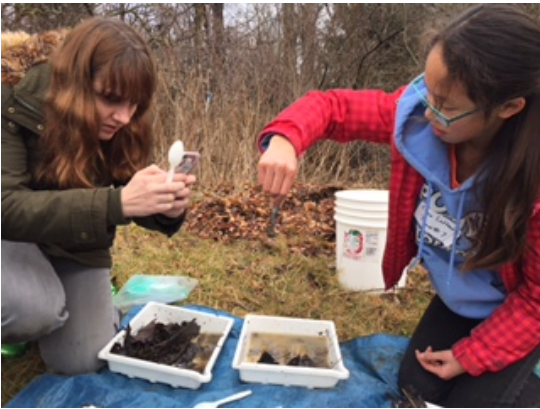
Stoneflies were found at eighteen of the thirty-one sites (58%) (map and Table 1). Four different types of stoneflies were found: Capnids, Perlodids, Nemourids and *Taeniopteryx* with the majority being Capnids. All stoneflies were found on the Middle or Lower branches.

Eight sites on the Lower Branch had stoneflies. This included four sites on Fellows Creek, three sites on Fowler Creek and one site on the main Lower Branch. All eight sites had slender winter stoneflies (Capnids) and one site (Fel6) also had Perlodids. The highest number of stoneflies on the Lower was at Fowl1 where 45 were found.

Nine sites on the Middle branch had stoneflies including one site on the main Middle branch (MR-2a). All nine sites had slender winter stoneflies (Capnids). In addition, one site also had Perlodids (John8), one site had Nemourids (John2) and two sites had *Taeniopteryx* (John1 and John3). The highest number of stoneflies was found at MR-27 (56). For the first time since 2009, stoneflies were found in the Tonquish Creek. They were found at Ton1.

This was an unusual Stonefly Search. In past years, we have been unable to sample some of our small streams because they have been frozen all the way to the bottom. This year, temperatures were so mild that there was no ice at all. But, the thaw did pose a problem in that water levels at some of our sites were too high to safely sample. Rather than postpone the event, we selected only small stream sites. This, along with better access to iceless streams contributed to finding more stoneflies than usual.

Thank you to all the volunteers, Team Leaders, Daisy Lovain for running registration, the University of Michigan-Dearborn for providing meeting space, Esma Tuncay for identifying specimens, the Alliance of Rouge Communities for funding, and Schoolcraft College, Wayne County and Susan Thompson for additional sampling. Thank you to those who shared their photos. There were so many good ones we are including as many as we can (see next two page). The Winter Stonefly Search is part of Friends of the Rouge's long term volunteer monitoring program.





Spring Bug Hunt – Sat. April 22 9am-4 pm UM-D EIC

Register by 4/7

Team Leader Training April 1 (must have previously attended an event)

www.therouge.org (register online)

(313) 792-9621 spetrella@therouge.org

Coordinated by Friends of the Rouge and funded by the Alliance of Rouge Communities. Additional data collection by Wayne County and Schoolcraft College

2017 Stonefly Search

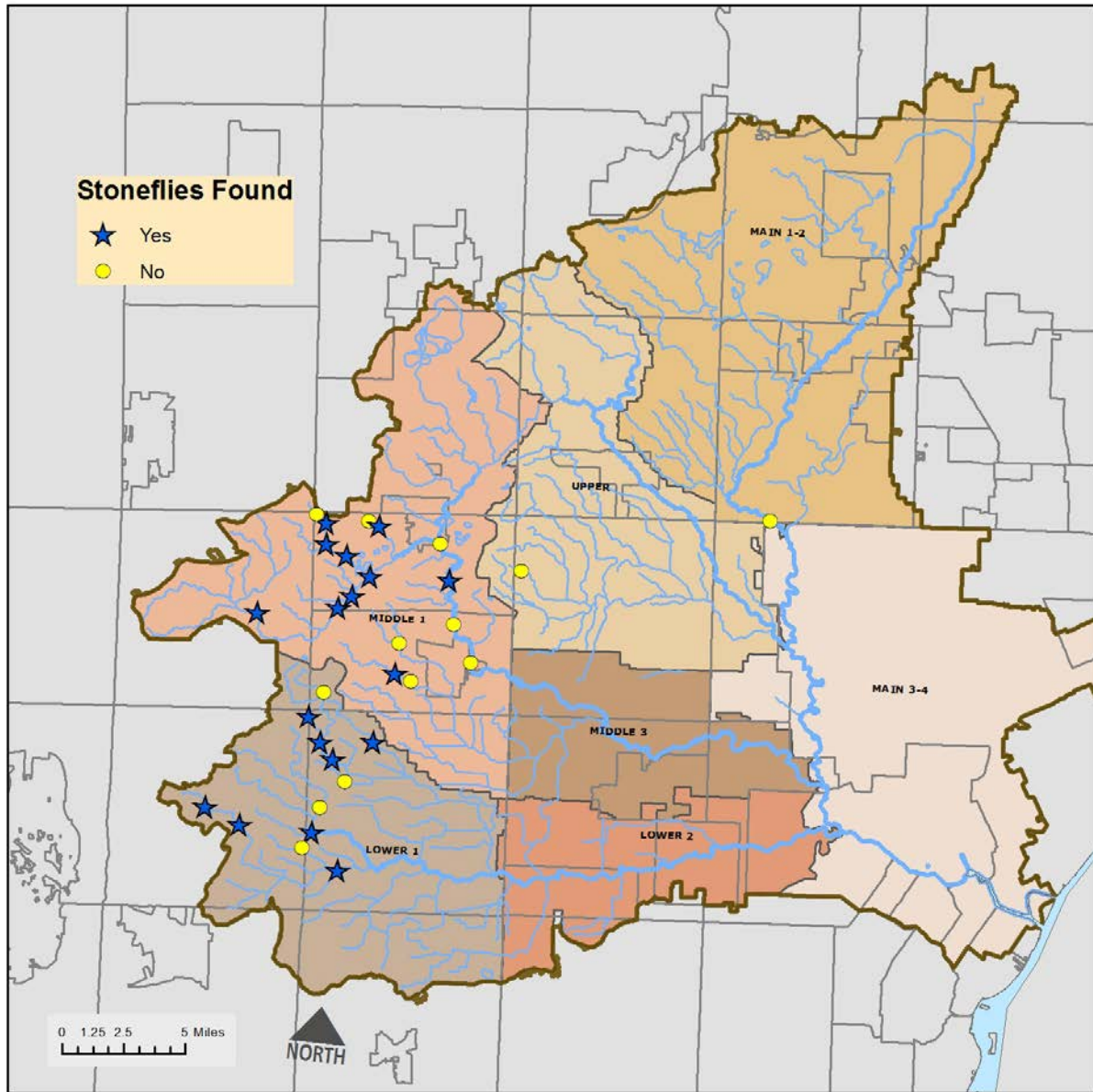


Table 1: 2017 Stonefly Search Results

Branch	FIELDID	Stream Name	Location	Collector*	ST17	Capnids	Perlodids	Nemourids	<i>Taeniopteryx</i>
Lower	Fel5	Fellows Creek	Warren Ridge	FOTR	Y	6			
Lower	Fel1	Fellows Creek	Top of Hill Ct	FOTR	N				
Lower	Fel6	Fellows Creek	Hanford	FOTR	Y	3	3		
Lower	Fel2	Fellows Creek	Vintage Valley	FOTR	N				
Lower	LR-9	Fellows Creek	Beck Warren	FOTR	Y	5			
Lower	Fel7	Fellows Creek	Napier Court	FOTR	Y	15			
Lower	Fowl1	Fowler Creek	Prospect	FOTR	Y	45			
Lower	Fowl3	Fowler Creek	Harris	FOTR	Y	1			
Lower	Fowl5	Fowler Creek	Fowler Denton	FOTR	Y	5			
Lower	Nfowl	Fowler Creek	Fowler Ridge	FOTR	N				
Lower	LR-8	Lower Rouge	Ridge Proctor	FOTR	Y	20			
Lower	Low2	Lower Rouge	Cherry Hill	FOTR	N				
Main	MN-5	Main Rouge	Bridge St	WC	N				
Middle	John1	Johnson Creek	5M Salem	FOTR	Y	5			1
Middle	John2	Johnson Creek	5M NV	FOTR	Y	3		1	
Middle	John8	Johnson Creek	Maybury Angell	FOTR	Y	4	2		
Middle	MR-27	Johnson Creek	Ridge	FOTR	Y	56			
Middle	John3	Johnson Creek	6M NV	FOTR	Y	18			1
Middle	John7	Johnson Creek	Arcadia	FOTR	Y	11			
Middle	MR-22	Johnson Creek	Maybury south	ST	Y	50			
Middle	MR-25	Johnson Creek	Maybury East	ST	Y	14			
Middle	MR-23	Johnson Creek	Maybury north	ST	N				
Middle	MR-26	Johnson Creek	Napier Rd	ST	N				
Middle	MR-3	Middle Rouge	Plym Riverside	WC	N				
Middle	MR-1	Middle Rouge	Northville Rec W	WC	N				
Middle	MR-18	Middle Rouge	Springbrook Rec	WC	N				
Middle	MR-2a	Middle Rouge	Reservoir Rd W	WC	Y	4			
Middle	Ton1	Tonquish Creek	Plym Twp Pk	FOTR	Y	2			
Middle	Ton1/2	Tonquish Creek	Canton Ctr Rd	FOTR	N				
Middle	MR-28	Tonquish Creek	N Branch	ST	N				
Upper	Bell2	Bell Branch	Schoolcraft College	Sch	N				

* FOTR=Stonefly Search team, Sch=Schoolcraft College, ST=Sue Thompson, WC=Wayne County