

# Walled Lake: Cool City by the Lake



A project to promote the connections between Walled Lake's Historic Downtown Lakefront and the Rouge River Watershed

Funded by Clean Michigan Initiative

## The Issue: Lack of Connection to Walled Lake

*Public Perception*



*Physical & Aesthetic Issues*



## The Project: Build a Connection to Walled Lake

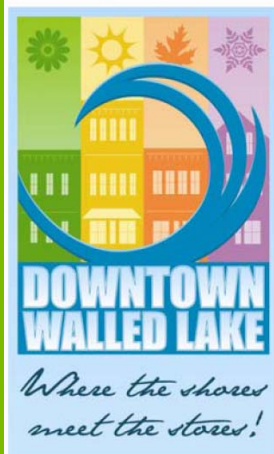
GOAL 1: Develop a brand identity for downtown Walled Lake's Historic Lakefront District that connects the downtown to the Lake and the Rouge River.

GOAL 2: Implement the brand identity in downtown Walled Lake's Historic Lakefront District through urban design and simple stormwater BMP's

GOAL 3: Evaluate opportunities in the downtown for Implementation of Best Management Practices.

GOAL 4: Conduct outreach to advance resident and business awareness.

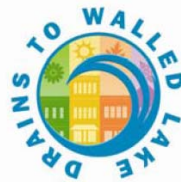
GOAL 1: Develop a brand identity for downtown Walled Lake's Historic Lakefront District that connects the downtown to the Lake and the Rouge River.



BANNER



SEWER STENCIL



SEWER MEDALLION



MEDALLION

### DELIVERABLES:

- Logo
- Slogan
- Set of guidelines for use of brand and options for application

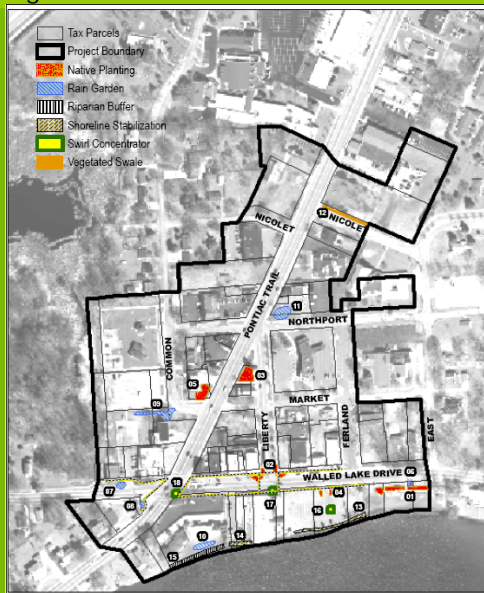
**GOAL 2: Implement the brand identity in downtown Walled Lake's Historic Lakefront District through urban design and simple stormwater BMP's**



The following were installed in the downtown historic lakefront district:

- 20 streetlight banners with logo & slogan
- 3 benches with logo & slogan
- 3 trash cans with logo & slogan
- 3 planters with logo & slogan
- Installation of native plants with logo & slogan
- Installation of 2 rain barrels with logo & slogan
- Stenciling of all storm drains with logo & slogan

**GOAL 3: Evaluate opportunities in the downtown for implementation of Best Management Practices.**



Map Data Provided by: City of Walled Lake  
 City of Walled Lake, Michigan  
 Cool Cities by the Lake  
 Figure 1: Stormwater BMP Opportunities

Detailed report and presentation of opportunities within the Historic District for implementation via stormwater BMP's, urban design elements, and community outreach for consideration by Walled Lake City Council and DPW, including cost estimates.

**GOAL 3: Evaluate opportunities in the downtown for implementation of Best Management Practices.**



Site 13 Shoreline stabilization opportunity south of the parking lot for Bayside Sports Grille Restaurant

Detailed report and presentation of opportunities within the Historic District for implementation via stormwater BMP's, urban design elements, and community outreach for consideration by Walled Lake City Council and DPW, including cost estimates.



Site 12 Vegetated swale opportunity along the north side of Nicolet, east of North Pontiac Tr.

**GOAL 4: Conduct outreach to advance resident and business awareness.**



- Website including information on project for the public
- Presentations delivered to relevant public boards and committees.
- Interpretive sign installed at Mercer Beach.

# WALLED LAKE

## What is a watershed?

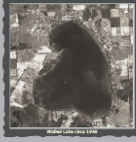
A watershed is an area of land that drains into a common body of water such as a stream, river, lake, or groundwater. In this case, the Detroit River. Walled Lake drains 4 square miles and is situated in the headwaters in the Middle One Branch of the Rouge River Watershed.

The Rouge River drains 428 square miles in 45 municipalities and three counties and is home to 1.5 million people. The Rouge River ultimately discharges to the Detroit River near the Rouge Assembly Plant in Detroit. The major threat to the Rouge River Watershed is nonpoint source pollution caused by stormwater runoff.



Rouge River Watershed

## Where's the wall?

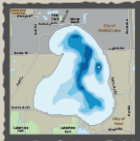


The "wall" that gave Walled Lake its name was originally described by the first settler to the area, Walter Howitt, in 1826. It consisted of a long stone wall, approximately 150 feet by 4 feet high by 5 feet wide along the west shore of the lake. It is not known how the wall originated.

- Theories and legends include:
- The wall was built by Native Americans to trap fish
  - The wall was a memorial to a fisherman who drowned in the lake
  - The wall was caused by drift deposits due to water and ice action
  - The wall was caused by glacial activity

## Is the lake clean?

Nonpoint source pollution is caused by runoff from rainfall or snowmelt that flows across the landscape, picks up natural and human contaminants, and washes them into waterways. Such contaminants may include: fertilizer, oil, grease, toxic chemicals, sediment, salt, and bacteria. Walled Lake has 36 stormwater outfalls that deliver stormwater runoff directly to the lake. Both Walled Lake and Howitt are currently under a Phase II Stormwater Permit from the United States Environmental Protection Agency, which requires communities to take action to reduce and mitigate the impacts of stormwater runoff.



Walled Lake

## Where's the beach?



Walled Lake is a natural kettle lake that was probably formed about 12,000 years ago. The ice formed a depression in the glacial outwash and filled the depression with water as it melted. Walled Lake is primarily carbon-fed, though several small creeks also contribute. An outlet drains to the Middle Branch of the Rouge River.

**Lake Statistics**  
 Volume: 2,627,000,000 Gallons  
 Legal Elevation: 912.8 Feet  
 Average Depth: 13 Feet  
 Maximum Depth: 50 Feet  
 Perimeter: 4.58 Miles  
 Surface Area: 652 Acres  
 Flushing Rate: 6.67 Years

**Trophic Status:** Oligotrophic  
**River Basin:** Rouge  
**Fish Species:** Large and smallmouth bass, bluegill, perch, and northern pike

## How can I help?

- Don't feed wildlife near the shoreline. Waste produced by wildlife can add a significant source of nutrients to the water.
- Use fertilizers that don't contain phosphorus.
- Don't mow to the edge! Maintain a buffer of deep rooted plants, trees, or shrubs adjacent to wetlands and open water.
- Support local businesses. Shop "Where the shores meet the stores" in Downtown Walled Lake!



Grant funding generously provided by:

### MILESTONES

<p><b>1824</b> Established as the first water tower of Walled Lake near the Grand Convent.</p> <p><b>1825</b> The first European settler, Walter Howitt, builds the stone wall that surrounds Walled Lake.</p> <p><b>1830</b> "White Rock" begins trading post is established.</p> <p><b>1836</b> Walled Lake is platted.</p> <p><b>1840</b> Dr. James M. Berg writes "Walled Lake and Howitt" (1840 edition for 40 years).</p> <p><b>1860</b> "Tombstone" (1860 edition for 40 years).</p> <p><b>1883</b> Chicago Architectural Firm designs the first bridge to Walled Lake (1883).</p> <p><b>1920</b> Walled Lake Park opens. National Wild and Scenic Rivers Act established. Park features include: Walled Lake Park, Walled Lake Park, Walled Lake Park, Walled Lake Park.</p> <p><b>1955</b> Cotton Shores established by the Howitt family.</p> <p><b>1979</b> The city of Walled Lake and Howitt County purchase Walled Lake and within five years, a water tower is built for the lake treatment.</p> <p><b>2000</b> Walled Lake Park is the first to be designated as a National County Program and is recognized as a National County Program and is recognized as a National County Program and is recognized as a National County Program.</p>	<p><b>1900</b> The first bridge to Walled Lake</p> <p><b>1940</b> Walled Lake Train Station</p> <p><b>1955</b> Cotton Shores Park</p> <p><b>1979</b> Walled Lake Park</p> <p><b>2000</b> Walled Lake Park</p>
--	---