

# Rouge River Gateway Master Plan Update: 2011

Environmental Stewardship

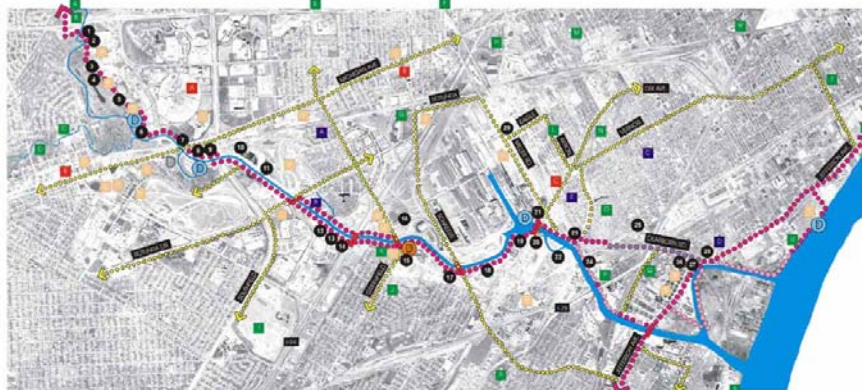
Cultural Heritage

Recreation

Economic Development



## Rouge Gateway Master Plan (2001)



- POTENTIAL INTERPRETIVE POINTS ALONG THE TRAIL**
1. FLOOD PLAIN OVERVIEW
  2. WINDY FIELDS BLUFF
  3. COMMUNITY CHURCH GARDEN
  4. HENRY FORD HISTORICAL CENTER
  5. THE ROUGE RIVER OVERLOOK
  6. HENRY FORD ELECTRIC FURNACE
  7. TALL GATE AND CIVILIAN HISTORICAL MARKER
  8. CARSON HILL TOWER
  9. HISTORY OF GREENFIELD VILLAGE
  10. COMMUNITY CHURCH
  11. COMMUNITY CHURCH OVERLOOK FACILITY
  12. HENRY FORD HISTORICAL CENTER
  13. HENRY FORD HISTORICAL CENTER
  14. HENRY FORD HISTORICAL CENTER
  15. HENRY FORD HISTORICAL CENTER
  16. HENRY FORD HISTORICAL CENTER
  17. HENRY FORD HISTORICAL CENTER
  18. HENRY FORD HISTORICAL CENTER
  19. HENRY FORD HISTORICAL CENTER
  20. HENRY FORD HISTORICAL CENTER
  21. HENRY FORD HISTORICAL CENTER
  22. HENRY FORD HISTORICAL CENTER
  23. HENRY FORD HISTORICAL CENTER
  24. HENRY FORD HISTORICAL CENTER
  25. HENRY FORD HISTORICAL CENTER
  26. HENRY FORD HISTORICAL CENTER
  27. HENRY FORD HISTORICAL CENTER
  28. HENRY FORD HISTORICAL CENTER
  29. HENRY FORD HISTORICAL CENTER
  30. HENRY FORD HISTORICAL CENTER
  31. HENRY FORD HISTORICAL CENTER
  32. HENRY FORD HISTORICAL CENTER
  33. HENRY FORD HISTORICAL CENTER
  34. HENRY FORD HISTORICAL CENTER
  35. HENRY FORD HISTORICAL CENTER
  36. HENRY FORD HISTORICAL CENTER
  37. HENRY FORD HISTORICAL CENTER
  38. HENRY FORD HISTORICAL CENTER
  39. HENRY FORD HISTORICAL CENTER
  40. HENRY FORD HISTORICAL CENTER
  41. HENRY FORD HISTORICAL CENTER
  42. HENRY FORD HISTORICAL CENTER
  43. HENRY FORD HISTORICAL CENTER
  44. HENRY FORD HISTORICAL CENTER
  45. HENRY FORD HISTORICAL CENTER
  46. HENRY FORD HISTORICAL CENTER
  47. HENRY FORD HISTORICAL CENTER
  48. HENRY FORD HISTORICAL CENTER
  49. HENRY FORD HISTORICAL CENTER
  50. HENRY FORD HISTORICAL CENTER
  51. HENRY FORD HISTORICAL CENTER
  52. HENRY FORD HISTORICAL CENTER
  53. HENRY FORD HISTORICAL CENTER
  54. HENRY FORD HISTORICAL CENTER
  55. HENRY FORD HISTORICAL CENTER
  56. HENRY FORD HISTORICAL CENTER
  57. HENRY FORD HISTORICAL CENTER
  58. HENRY FORD HISTORICAL CENTER
  59. HENRY FORD HISTORICAL CENTER
  60. HENRY FORD HISTORICAL CENTER
  61. HENRY FORD HISTORICAL CENTER
  62. HENRY FORD HISTORICAL CENTER
  63. HENRY FORD HISTORICAL CENTER
  64. HENRY FORD HISTORICAL CENTER
  65. HENRY FORD HISTORICAL CENTER
  66. HENRY FORD HISTORICAL CENTER
  67. HENRY FORD HISTORICAL CENTER
  68. HENRY FORD HISTORICAL CENTER
  69. HENRY FORD HISTORICAL CENTER
  70. HENRY FORD HISTORICAL CENTER
  71. HENRY FORD HISTORICAL CENTER
  72. HENRY FORD HISTORICAL CENTER
  73. HENRY FORD HISTORICAL CENTER
  74. HENRY FORD HISTORICAL CENTER
  75. HENRY FORD HISTORICAL CENTER
  76. HENRY FORD HISTORICAL CENTER
  77. HENRY FORD HISTORICAL CENTER
  78. HENRY FORD HISTORICAL CENTER
  79. HENRY FORD HISTORICAL CENTER
  80. HENRY FORD HISTORICAL CENTER
  81. HENRY FORD HISTORICAL CENTER
  82. HENRY FORD HISTORICAL CENTER
  83. HENRY FORD HISTORICAL CENTER
  84. HENRY FORD HISTORICAL CENTER
  85. HENRY FORD HISTORICAL CENTER
  86. HENRY FORD HISTORICAL CENTER
  87. HENRY FORD HISTORICAL CENTER
  88. HENRY FORD HISTORICAL CENTER
  89. HENRY FORD HISTORICAL CENTER
  90. HENRY FORD HISTORICAL CENTER
  91. HENRY FORD HISTORICAL CENTER
  92. HENRY FORD HISTORICAL CENTER
  93. HENRY FORD HISTORICAL CENTER
  94. HENRY FORD HISTORICAL CENTER
  95. HENRY FORD HISTORICAL CENTER
  96. HENRY FORD HISTORICAL CENTER
  97. HENRY FORD HISTORICAL CENTER
  98. HENRY FORD HISTORICAL CENTER
  99. HENRY FORD HISTORICAL CENTER
  100. HENRY FORD HISTORICAL CENTER
- PUBLIC PARKS**
- 1. WOODS ROUGE RAINBOW
  - 2. WOODS ROUGE RAINBOW
  - 3. WOODS ROUGE RAINBOW
  - 4. WOODS ROUGE RAINBOW
  - 5. WOODS ROUGE RAINBOW
  - 6. WOODS ROUGE RAINBOW
  - 7. WOODS ROUGE RAINBOW
  - 8. WOODS ROUGE RAINBOW
  - 9. WOODS ROUGE RAINBOW
  - 10. WOODS ROUGE RAINBOW
  - 11. WOODS ROUGE RAINBOW
  - 12. WOODS ROUGE RAINBOW
  - 13. WOODS ROUGE RAINBOW
  - 14. WOODS ROUGE RAINBOW
  - 15. WOODS ROUGE RAINBOW
  - 16. WOODS ROUGE RAINBOW
  - 17. WOODS ROUGE RAINBOW
  - 18. WOODS ROUGE RAINBOW
  - 19. WOODS ROUGE RAINBOW
  - 20. WOODS ROUGE RAINBOW
  - 21. WOODS ROUGE RAINBOW
  - 22. WOODS ROUGE RAINBOW
  - 23. WOODS ROUGE RAINBOW
  - 24. WOODS ROUGE RAINBOW
  - 25. WOODS ROUGE RAINBOW
  - 26. WOODS ROUGE RAINBOW
  - 27. WOODS ROUGE RAINBOW
  - 28. WOODS ROUGE RAINBOW
  - 29. WOODS ROUGE RAINBOW
  - 30. WOODS ROUGE RAINBOW
  - 31. WOODS ROUGE RAINBOW
  - 32. WOODS ROUGE RAINBOW
  - 33. WOODS ROUGE RAINBOW
  - 34. WOODS ROUGE RAINBOW
  - 35. WOODS ROUGE RAINBOW
  - 36. WOODS ROUGE RAINBOW
  - 37. WOODS ROUGE RAINBOW
  - 38. WOODS ROUGE RAINBOW
  - 39. WOODS ROUGE RAINBOW
  - 40. WOODS ROUGE RAINBOW
  - 41. WOODS ROUGE RAINBOW
  - 42. WOODS ROUGE RAINBOW
  - 43. WOODS ROUGE RAINBOW
  - 44. WOODS ROUGE RAINBOW
  - 45. WOODS ROUGE RAINBOW
  - 46. WOODS ROUGE RAINBOW
  - 47. WOODS ROUGE RAINBOW
  - 48. WOODS ROUGE RAINBOW
  - 49. WOODS ROUGE RAINBOW
  - 50. WOODS ROUGE RAINBOW
  - 51. WOODS ROUGE RAINBOW
  - 52. WOODS ROUGE RAINBOW
  - 53. WOODS ROUGE RAINBOW
  - 54. WOODS ROUGE RAINBOW
  - 55. WOODS ROUGE RAINBOW
  - 56. WOODS ROUGE RAINBOW
  - 57. WOODS ROUGE RAINBOW
  - 58. WOODS ROUGE RAINBOW
  - 59. WOODS ROUGE RAINBOW
  - 60. WOODS ROUGE RAINBOW
  - 61. WOODS ROUGE RAINBOW
  - 62. WOODS ROUGE RAINBOW
  - 63. WOODS ROUGE RAINBOW
  - 64. WOODS ROUGE RAINBOW
  - 65. WOODS ROUGE RAINBOW
  - 66. WOODS ROUGE RAINBOW
  - 67. WOODS ROUGE RAINBOW
  - 68. WOODS ROUGE RAINBOW
  - 69. WOODS ROUGE RAINBOW
  - 70. WOODS ROUGE RAINBOW
  - 71. WOODS ROUGE RAINBOW
  - 72. WOODS ROUGE RAINBOW
  - 73. WOODS ROUGE RAINBOW
  - 74. WOODS ROUGE RAINBOW
  - 75. WOODS ROUGE RAINBOW
  - 76. WOODS ROUGE RAINBOW
  - 77. WOODS ROUGE RAINBOW
  - 78. WOODS ROUGE RAINBOW
  - 79. WOODS ROUGE RAINBOW
  - 80. WOODS ROUGE RAINBOW
  - 81. WOODS ROUGE RAINBOW
  - 82. WOODS ROUGE RAINBOW
  - 83. WOODS ROUGE RAINBOW
  - 84. WOODS ROUGE RAINBOW
  - 85. WOODS ROUGE RAINBOW
  - 86. WOODS ROUGE RAINBOW
  - 87. WOODS ROUGE RAINBOW
  - 88. WOODS ROUGE RAINBOW
  - 89. WOODS ROUGE RAINBOW
  - 90. WOODS ROUGE RAINBOW
  - 91. WOODS ROUGE RAINBOW
  - 92. WOODS ROUGE RAINBOW
  - 93. WOODS ROUGE RAINBOW
  - 94. WOODS ROUGE RAINBOW
  - 95. WOODS ROUGE RAINBOW
  - 96. WOODS ROUGE RAINBOW
  - 97. WOODS ROUGE RAINBOW
  - 98. WOODS ROUGE RAINBOW
  - 99. WOODS ROUGE RAINBOW
  - 100. WOODS ROUGE RAINBOW
- NEIGHBORHOOD DESTINATIONS**
- 1. SPRINGWELL
  - 2. SPRINGWELL
  - 3. SPRINGWELL
  - 4. SPRINGWELL
  - 5. SPRINGWELL
  - 6. SPRINGWELL
  - 7. SPRINGWELL
  - 8. SPRINGWELL
  - 9. SPRINGWELL
  - 10. SPRINGWELL
  - 11. SPRINGWELL
  - 12. SPRINGWELL
  - 13. SPRINGWELL
  - 14. SPRINGWELL
  - 15. SPRINGWELL
  - 16. SPRINGWELL
  - 17. SPRINGWELL
  - 18. SPRINGWELL
  - 19. SPRINGWELL
  - 20. SPRINGWELL
  - 21. SPRINGWELL
  - 22. SPRINGWELL
  - 23. SPRINGWELL
  - 24. SPRINGWELL
  - 25. SPRINGWELL
  - 26. SPRINGWELL
  - 27. SPRINGWELL
  - 28. SPRINGWELL
  - 29. SPRINGWELL
  - 30. SPRINGWELL
  - 31. SPRINGWELL
  - 32. SPRINGWELL
  - 33. SPRINGWELL
  - 34. SPRINGWELL
  - 35. SPRINGWELL
  - 36. SPRINGWELL
  - 37. SPRINGWELL
  - 38. SPRINGWELL
  - 39. SPRINGWELL
  - 40. SPRINGWELL
  - 41. SPRINGWELL
  - 42. SPRINGWELL
  - 43. SPRINGWELL
  - 44. SPRINGWELL
  - 45. SPRINGWELL
  - 46. SPRINGWELL
  - 47. SPRINGWELL
  - 48. SPRINGWELL
  - 49. SPRINGWELL
  - 50. SPRINGWELL
  - 51. SPRINGWELL
  - 52. SPRINGWELL
  - 53. SPRINGWELL
  - 54. SPRINGWELL
  - 55. SPRINGWELL
  - 56. SPRINGWELL
  - 57. SPRINGWELL
  - 58. SPRINGWELL
  - 59. SPRINGWELL
  - 60. SPRINGWELL
  - 61. SPRINGWELL
  - 62. SPRINGWELL
  - 63. SPRINGWELL
  - 64. SPRINGWELL
  - 65. SPRINGWELL
  - 66. SPRINGWELL
  - 67. SPRINGWELL
  - 68. SPRINGWELL
  - 69. SPRINGWELL
  - 70. SPRINGWELL
  - 71. SPRINGWELL
  - 72. SPRINGWELL
  - 73. SPRINGWELL
  - 74. SPRINGWELL
  - 75. SPRINGWELL
  - 76. SPRINGWELL
  - 77. SPRINGWELL
  - 78. SPRINGWELL
  - 79. SPRINGWELL
  - 80. SPRINGWELL
  - 81. SPRINGWELL
  - 82. SPRINGWELL
  - 83. SPRINGWELL
  - 84. SPRINGWELL
  - 85. SPRINGWELL
  - 86. SPRINGWELL
  - 87. SPRINGWELL
  - 88. SPRINGWELL
  - 89. SPRINGWELL
  - 90. SPRINGWELL
  - 91. SPRINGWELL
  - 92. SPRINGWELL
  - 93. SPRINGWELL
  - 94. SPRINGWELL
  - 95. SPRINGWELL
  - 96. SPRINGWELL
  - 97. SPRINGWELL
  - 98. SPRINGWELL
  - 99. SPRINGWELL
  - 100. SPRINGWELL
- COMPREHENSIVE DESTINATION & INTERPRETIVE PROGRAM PLAN**
- ROUGE RIVER GATEWAY PROJECT MASTER PLAN
- STUDIED BY: ROUGE RIVER NATIONAL WEST  
REVISOR: DEVON/DAVID PROJECT  
OCTOBER 2001
- ROUGE RIVER  
WATER TO PROTECT

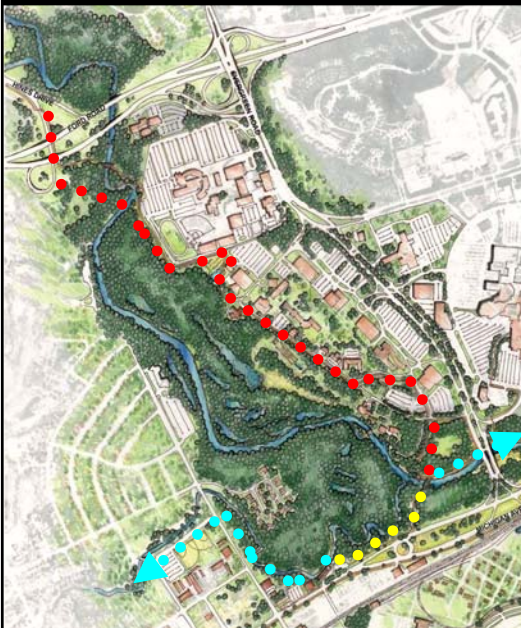
Destinations and Interpretive Points in the Rouge Gateway 12



## A photograph showing a paved path leading through a lush, green landscape. The path is made of reddish-brown bricks and curves to the right. On the left side of the path, there is a strip of green grass. On the right side, there is a bed of tall, green grasses and some yellow flowers. In the background, there is a dense line of trees and a small body of water. The sky is blue with some white clouds.



## Gateway Greenway Phase 1



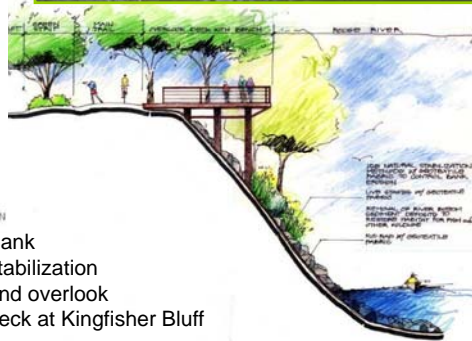
Gateway Greenway Phase I – North Bridge

- ● ● ● ● Wayne County Segment: Completed 2005
- ● ● ● ● Dearborn Segment: Completed
- ● ● ● ● Future Dearborn Greenway

## Kingfisher Bluff restoration moved from concepts ...



## Henry Ford Community College



Bank stabilization and overlook deck at Kingfisher Bluff

## .....to reality

- Stabilized the stream bank at Kingfisher Bluff to eliminate this area as a source of excessive sediment to the Rouge River.
- Created scenic overlook and installed interpretive signage to educate the public about the Rouge River
- Constructed a short walkway to the Gateway Trail that connects to the Rouge Parkway and continues to Michigan Avenue.
- Installed best management practices to manage storm water from the adjacent campus parking area



- Co-Chair, Rouge Gateway Partnership
- Environmental Interpretive Center one of first Gateway Master Plan projects completed
  - Grow zone added in 2009
  - Annual Rouge Rescue site
  - Many other activities

Grow Zone photos courtesy Alliance of Rouge Communities/ECT

## Rouge Oxbow Restoration Phases & Features

### Phase 1

#### Oxbow Wetland Restoration:

- Construction Completed 2002
- Additional features added 2004

### Phase 2

#### Combined sewer overflow (CSO) removal:

- Ongoing

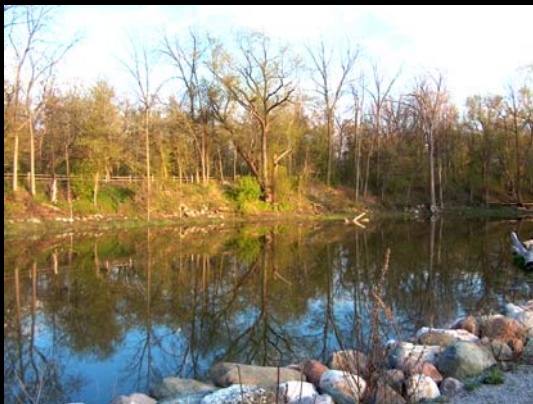
### Phase 3

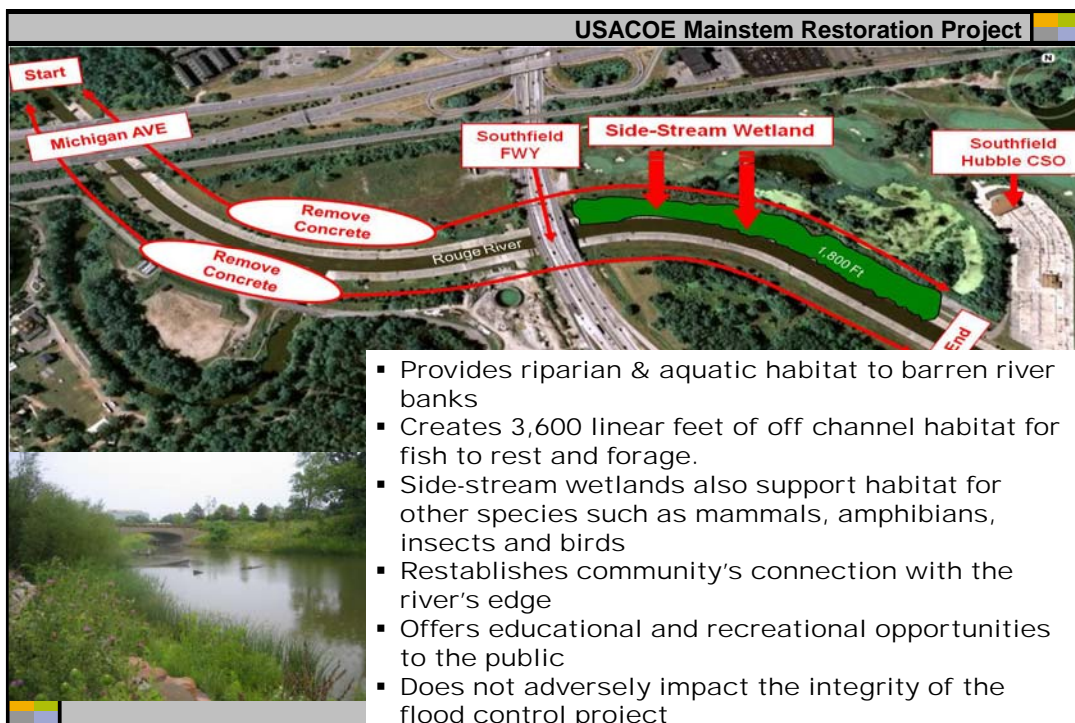
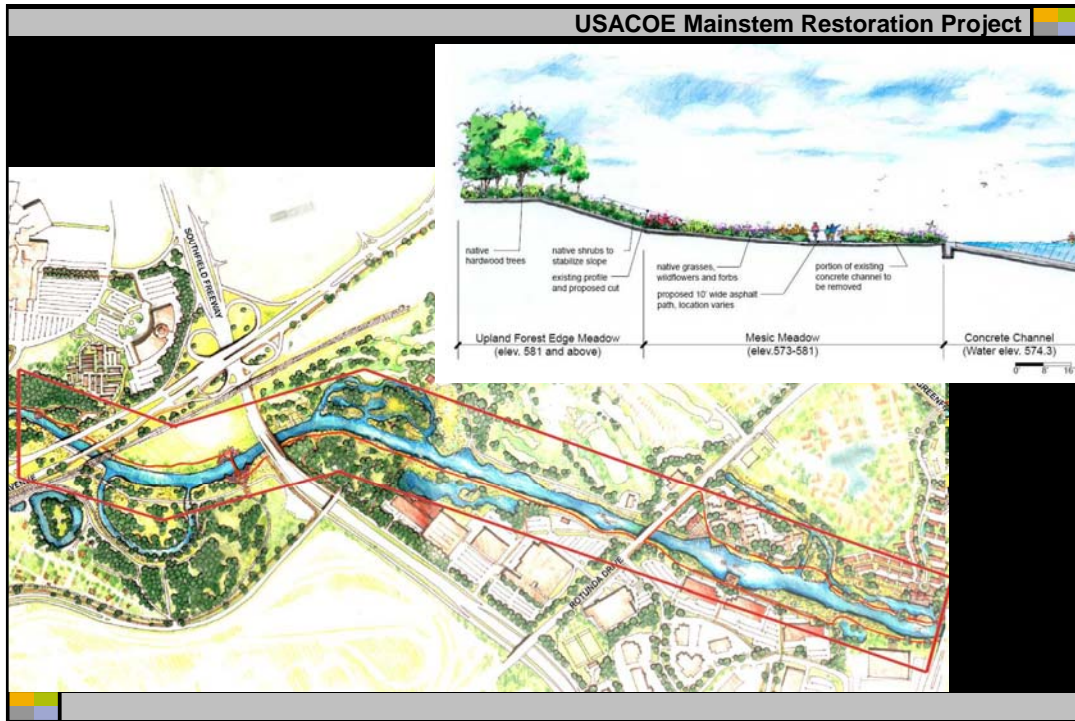
#### Open water connections to the Rouge River

- Connection at east end completed by Ford Motor Company and other partners
- Installed storm water management features as part of Proving Ground improvements

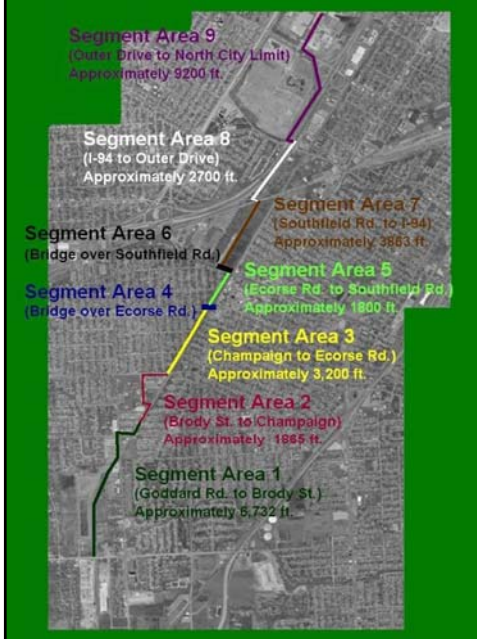


## Oxbow Restoration Project





## Allen Park Greenways Project



- The Allen Park Greenway is a project of the City of Allen Park in cooperation with the Downriver Linked Greenways Initiative. When completed, Allen Park Greenways will connect residents and visitors to parks, schools, shopping areas and neighboring communities.
- Currently, trail users can access greenways near the Fairlane Green shopping center or Champaign Park using existing sidewalks. At Fairlane Green, they can travel the greenway path around ponds and through forested areas adjacent to local retailers. At Champaign Park, trails meander through the park between Allen Park High School and Pelham Road.
  - Segment Area 5 completed in 2001
  - Funding is in place to construct Segment Area 2.

## Ford Motor Company Projects – Former Clay Mines/Fairlane Green



- 1 million square feet of green building retail & recreational center
- 43-acre park and 3.5 miles of trails
  - 2/3 of site to remain as undeveloped green space
- Bio-swales & wetland ponds
- Green screens, hedgerows and prairie-style landscaping
- Recycled-content materials comprise 23% of all building materials used and 2/3 of the construction waste was recycled.
- 2,000 permanent jobs
- Phase I opened 2006 and is the nations first retail development to receive Gold certification through the U.S. Green Building Council's (USGBC) Leadership in Energy and Environmental Design (LEED) program



Photos courtesy MDEQ

## Melvindale and Dearborn Projects

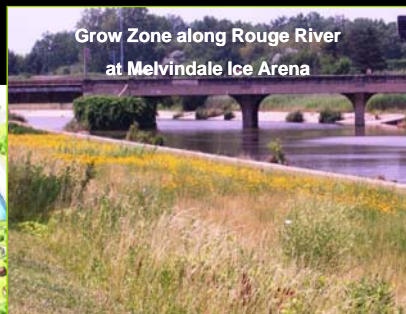


Swirl concentrator for storm water treatment



Dearborn

Melvindale



Grow Zone along Rouge River at Melvindale Ice Arena

### Dearborn DPW Yard Storm Water Management Project

- Installed rain gardens in parking area
- Relocate storage piles to enclosed areas
- Direct remaining storm water to swirl concentrator
- Wetland detention area along river



Wetland Detention along Rouge River

Photos courtesy Sally Petrella, Friends of the Rouge except jogger photo courtesy Hamilton Anderson

## Ongoing Pollution Control Projects

- **Dearborn Heights:**
  - Phase I program complete
  - Phase II: Flows from 3 add'l outfalls routed to existing Phase I CSO basin
  - Phase II: Currently revising CSO Control Program
- **Dearborn:** Currently revising CSO Control Program
- **Melvindale:** 1-million gallon SSO storage tank completed 2006
- **Allen Park:** SSO Outfall Closure and Wet Weather Pump Station
- **Detroit:**
  - Baby Creek screening and disinfection facility operational in 2007
  - Construction of Oakwood District sewer improvements underway
  - Upper Rouge Tunnel design underway



## Ford Motor Company Projects



- New Visitor Center and view to green roof opened spring 2004
- Wildflower planting near Rouge Steel
- Miller Road plantings becoming established

*Photos courtesy Ford Motor Company*

## Fordson Island

In 2011, Friends of the Rouge and the Detroit-Wayne County Port Authority, with funding assistance from the Great Lakes Restoration Initiative, removed 18 abandoned boats (including removal of gasoline from 3) fuel from the oxbow channel around Fordson Island



*Photos courtesy Sally Petrella, Friends of the Rouge*

## Southwest Detroit – Dearborn Greenway

- Master Plan complete
- First phase, Patton Park to Lapeer Park, completed fall 2008
- Next phase underway, along Vernor Highway from Woodmere Drive to Dix Road



## Connections to the Detroit River



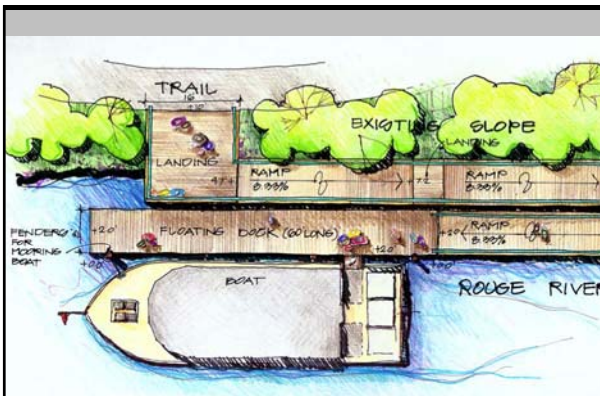


## Mexicantown International Welcome Center

- Dedicated August 22, 2008
- Completed by the State of Michigan, City of Detroit and the Mexicantown community



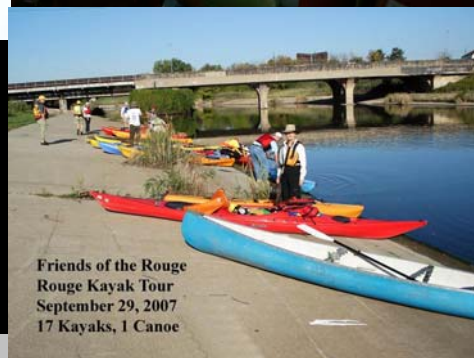
Located in southwest Detroit near the Ambassador Bridge, the new center welcomes millions of visitors and tourists who contribute more than \$17 billion annually to the state's economy



## Progress Toward Increased Recreation Goal



Photo courtesy Hamilton Anderson



Friends of the Rouge  
Rouge Kayak Tour  
September 29, 2007  
17 Kayaks, 1 Canoe

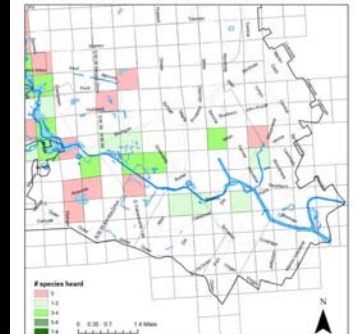
Photos courtesy Sally Petrella, Friends of the Rouge except as noted

Dissolved oxygen concentrations in the Main Rouge at Plymouth Road have improved 0.12 mg/L per year  
 ➤ Standards are being met over 95% of the time

In 2010, Stoneflies were found for the first time in the Main Branch  
 ➤ Stoneflies are sensitive indicators of healthy streams

Many other indicators of ecosystem health improvements

Friend of the Rouge Frog & Toad Survey Data 1998-2010



Soft shell turtle, with a damsel fly on its back, along Rouge River (photo Noel Mullett)




Black Crowned Night Heron observes removal of boats in Fordson Island oxbow



Photos courtesy Sally Petrella, Friends of the Rouge except as noted


## Corporate Investment in Rouge Gateway Area

- Ford Motor Company: Founding Gateway Partner
  - Rouge Manufacturing Facility
  - Fairlane Green
  - Many others
- Marathon: expansion and investment in Rouge refining facility
- SeverStal North America: remediation and investment in their steel plant within the historic Rouge site
- Edward C. Levy Company: Founding Gateway Partner
- Detroit Economic Growth Corporation: infrastructure improvements in Springwells Industrial Park
- Honeywell: Sediment assessment with EPA Great Lakes Legacy Act
- DTE Energy: alternative energy investments
- Many others




A barren, 200-foot expanse of broken concrete and metal, in place to stabilize the shoreline at DTE Rouge Plant...

....replaced by natural shoreline that creates a thriving habitat for fish and other wildlife species, will develop as the native plants grow, bloom and bear fruit.



### DTE Projects



- 10,000 square feet of wildflowers planted
- Nesting enhancements implemented for Peregrine Falcon habitat

Photos courtesy DTE



Neighborhoods

### Southwest Detroit Riverfront

Patton Park

Baby Creek Screening and Disinfection Facility

Fordson Island

DWSD

Oakwood Pump Station

Fort Street Bridge

Clark Park

Ambassador Bridge

Riverside Park

Detroit News

Port District

Motor City Intermodal Terminal

Mistersky Power Plant

Revere Copper & Brass Site

Fort Wayne

Springwells Subdivision

U.S. Steel (Zug Island)




## Rouge River Gateway Master Plan Update: 2011

