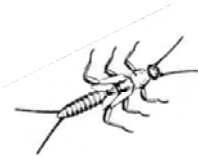


Volunteers needed to help look for sensitive aquatic insects that indicate good water quality

Annual Rouge River Winter Stonefly Search



Sponsored by Friends of the Rouge

Sat. Jan. 23, 2010

9:00 am – approx. 3:00 pm

Environmental Interpretive Center at the University of Michigan-Dearborn
4901 Evergreen Road Dearborn, MI 48128

No experience is necessary. Children and minors welcome when accompanied by one adult per child. Groups larger than six must be split. Must have own transportation to sampling sites (carpooling encouraged)

Volunteers are pre-assigned to teams that each travel to 2 stream sites where they pick through samples collected from the stream by team leaders. Results are provided to the Alliance of Rouge Communities, the Michigan Department of Environmental Quality, volunteers and others. Volunteers must dress for the weather.

Coordinated by Friends of the Rouge and supported by the Alliance of Rouge Communities

Registration required by Jan. 8, 2010
(313) 792-9621 or monitoring@therouge.org

www.therouge.org

**Friends
of the ROUGE**