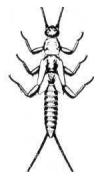


## Rouge River Watershed 2010 Winter Stonefly Search



Ninety-four volunteers attended Friends of the Rouge's 2010 Winter Stonefly Search on January 23 hosted at the University of Michigan-Dearborn's Environmental Interpretive Center. A group of students from Eastern Michigan University participated for the second year in a row. Wayne County Department of Public Services Water Quality Management Division (WC) sampled an additional two sites and Schoolcraft College students sampled one site on their campus.

*Stoneflies are sensitive indicators of healthy streams. Unlike other insects, winter stoneflies develop into adult flies in the winter. The Winter Stonefly Search is part of Friends of the Rouge's volunteer benthic monitoring program.*

Stoneflies were found for the first time in the Main Branch and the type found is a new species for this program. After eight years of sampling tributaries and major branches of the Main Rouge and coming up short, a broad-backed stonefly (Taeniopterygidae) was found on February 9 at Eight Mile and Telegraph by WC.

Twenty-nine sites were sampled and twenty of these had stoneflies. Most of the stoneflies found were slender winter stoneflies (Capniidae), genus *Allocapnia*. The exceptions were the Main branch site with the broad-back stonefly, Fellows Creek at Warren & Beck with Perlodid stoneflies in addition to slender winter stoneflies, and the Johnson Creek site at 5 Mile and Salem Road with three families: Capnids (*Allocapnia*), Perlodids and a Nemouridae.

### Lower Rouge

Fellows Creek and the Lower Rouge had stoneflies at seven of the eight sites sampled. One Fellows Creek site even had two families (Capniidae and Perlodidae) and stoneflies were found as far downstream as Flodin Park. This surprised FOTR staff to find stoneflies so far downstream and since the team lost their specimen, the site was re-sampled to confirm the results.

### Main Rouge

Wayne County employees sampling the Main Rouge at Eight Mile Road and Telegraph found Taeniopterygidae, the broad-back stonefly. The genus found (*Taeniopteryx*) is relatively tolerant, but this is still very significant to have stoneflies at all in the Main Rouge and so far downstream as Eight Mile Road.

### Middle Rouge

Eleven of the 17 sites sampled on the Middle Rouge had stoneflies. All six Johnson Creek sites had them and they were found on the Middle branch as far downstream as Springbrook Recreation Area, just south of M-14. Tonquish Creek did not have any stoneflies at any of the four sites sampled. This is troubling in that three Tonquish Creek sites have had stoneflies in the past.

### Upper Rouge

Capnid (*Allocapnia*) stoneflies were found once again in the Upper Branch - in Heritage Park. This is only the third time stoneflies have been found in the Upper Rouge and the first time since 2005. They were not found downstream in Shiawassee Park or in the Bell Branch at Schoolcraft College.

Thank you to all the volunteers! The Winter Stonefly Search is part of Friends of the Rouge's long term volunteer monitoring program and is supported by the Alliance of Rouge Communities. Please join us for the Spring Bug Hunt on Saturday April 24, 2010.

**See the results on a Google map at [www.therouge.org](http://www.therouge.org)**

**Spring Bug Hunt - Sat. April 24 9am-4 pm UM-D EIC \*Register by 4/9\***

Team Leader Training March 21 (must have previously attended an event)

**[www.therouge.org](http://www.therouge.org)** (register online)

**(313) 792-9621**

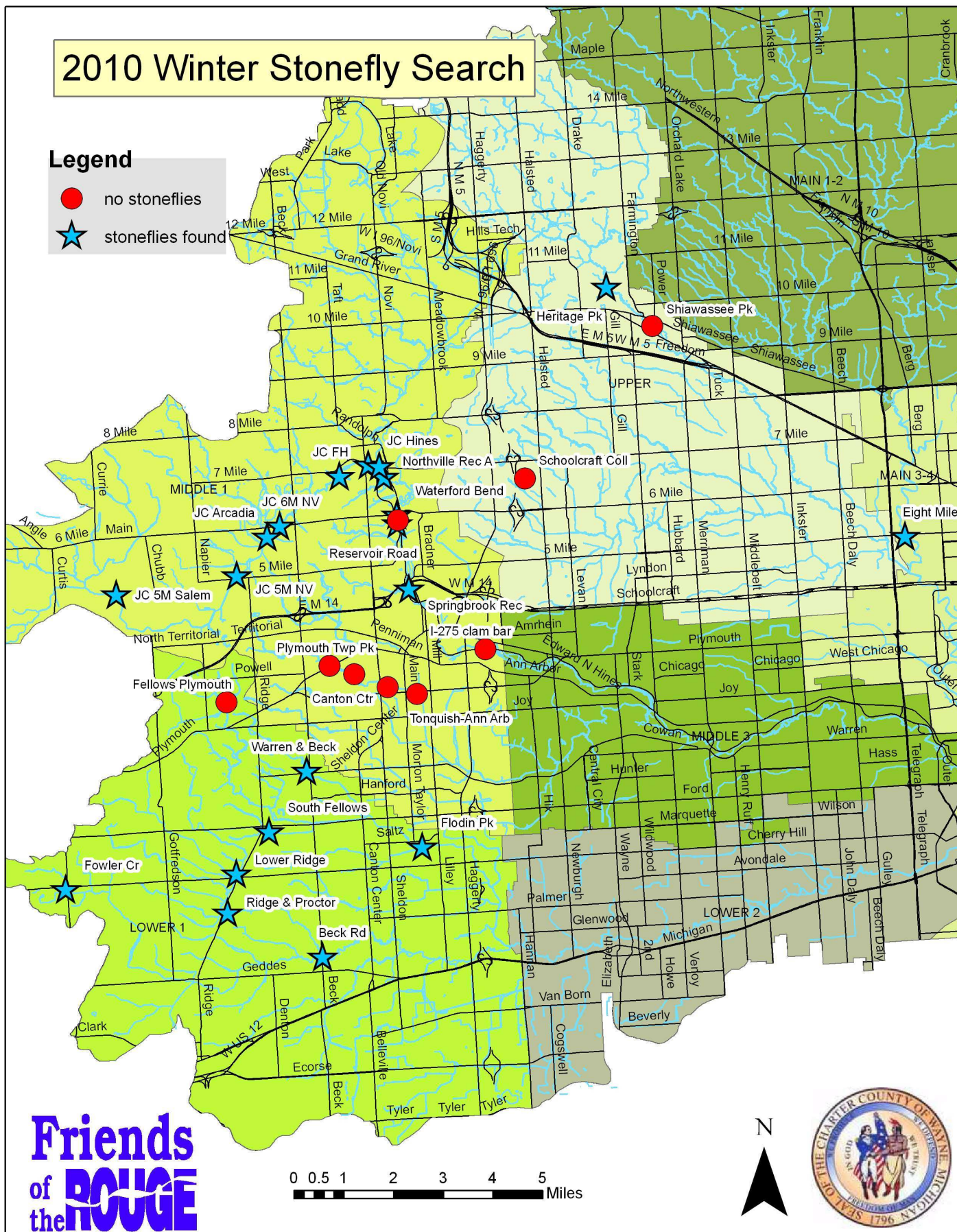
**[monitoring@therouge.org](mailto:monitoring@therouge.org)**

Coordinated by Friends of the Rouge and supported by the Alliance of Rouge Communities.

# 2010 Winter Stonefly Search

## Legend

- no stoneflies
- ★ stoneflies found



## 2010 Winter Stonefly Search Results

Branch	Fieldid	Site Name	Location	Waterbody	Longitude	Latitude	Stoneflies Found?	Type of Stonefly Found
Lower	Fel1	Fellows Plymouth	Napier/Powell	Fellows Creek	-83.53988	42.35729	N	
Lower	Fel2	South Fellows	Ford/Ridge	Fellows Creek	-83.52460	42.31932	Y	Capniidae
Lower	Fel4	Flodin Pk	Saltz Rd, Morton T. & Sheldon	Fellows Creek	-83.46471	42.31346	Y	Capniidae
Lower	Fowl1	Fowler Cr	Prospect/Cherry Hill	Fowler Creek	-83.60516	42.30423	Y	Capniidae
Lower	Fowl2	Beck Rd	Beck Road, N of Geddes	Fowler Creek	-83.50515	42.28226	Y	Capniidae
Lower	Low2	Lower Ridge	Cherry Hill/Ridge	Lower Rouge	-83.53793	42.30724	Y	Capniidae
Lower	LR-8	Ridge & Proctor		Lower Rouge	-83.54185	42.29598	Y	Capniidae
Lower	LR-9	Warren & Beck		Fellows Creek	-83.50924	42.33667	Y	Capniidae, Perlodidae
Main	MN-1	Eight Mile	8 Mile/Telegraph	Main Rouge	-83.27139	42.39972	Y	Taeniopteryx
Middle	John1	JC 5M Salem	5 Mile/Salem	Johnson Creek	-83.58194	42.38970	Y	Capniidae, Perlodidae, Nemouridae
Middle	John2	JC 5M NV	5 Mile/Ridge	Johnson Creek	-83.53440	42.39424	Y	Capniidae
Middle	John3	JC 6M NV	6 Mile/Beck	Johnson Creek	-83.51693	42.40844	Y	Capniidae
Middle	John5	JC FH	Fish Hatchery Park	Johnson Creek	-83.49289	42.42240	Y	Capniidae
Middle	John6	JC Hines	Hines/Sheldon	Johnson Creek	-83.48138	42.42546	Y	Capniidae
Middle	John7	JC Arcadia	Arcadia, 6 Mile & Beck	Johnson Creek	-83.52199	42.40528	Y	Capniidae
Middle	Mid1	Northville Rec Area	Northville Rd/7 Mile	Middle Rouge	-83.47546	42.42177	Y	Capniidae
Middle	MR-1	Northville Rec Area	Hines/7 Mile	Middle Rouge	-83.47712	42.42487	Y	Capniidae
Middle	MR-17	I-275 clam bar	West of I-275	Middle Rouge	-83.43757	42.37047	N	
Middle	MR-18	Springbrook Rec Area	East of M-14 on Hines	Middle Rouge	-83.46693	42.38892	Y	Capniidae
Middle	MR-2	Reservoir Road	S of 6 Mile, E of Hines	Middle Rouge	-83.47076	42.40800	Y	Capniidae
Middle	MR-20	Waterford Bend	Waterford Bend	Middle Rouge	-83.47079	42.41054	Y	Capniidae
Middle	MR-2a	Reservoir Road West	S of 6 Mile, E of Hines	Middle Rouge	-83.47040	42.40890	N	
Middle	Ton1	Plymouth Twp Pk	Beck/Ann Arbor Tr	Tonquish Creek	-83.49895	42.36701	N	
Middle	Ton1/2	Canton Ctr	Canton Ctr Rd	Tonquish Creek	-83.48939	42.36437	N	
Middle	MR-14	Smith Elementary	Byron/McKinley	Tonquish Creek	-83.47638	42.36027	N	
Middle	Ton2	Tonquish-Ann Arbor Rd	Ann Arbor Rd/Lilley	Tonquish Creek	-83.46507	42.35809	N	
Upper	Bell2	Schoolcraft College	6 Mile/Haggerty	Bell Branch	-83.42000	42.42000	N	
Upper	Up1	Heritage Pk	Farmington/10 Mile	Upper Rouge	-83.38567	42.47526	Y	Capniidae
Upper	Up2	Shiawassee Pk	Shiawassee/Power	Upper Rouge	-83.36811	42.46323	N	