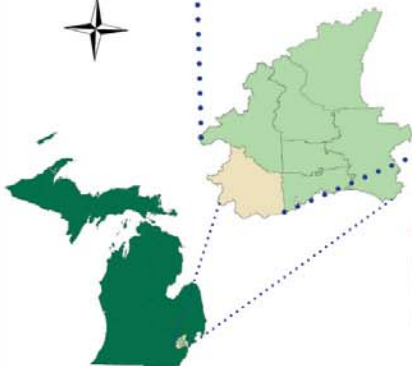
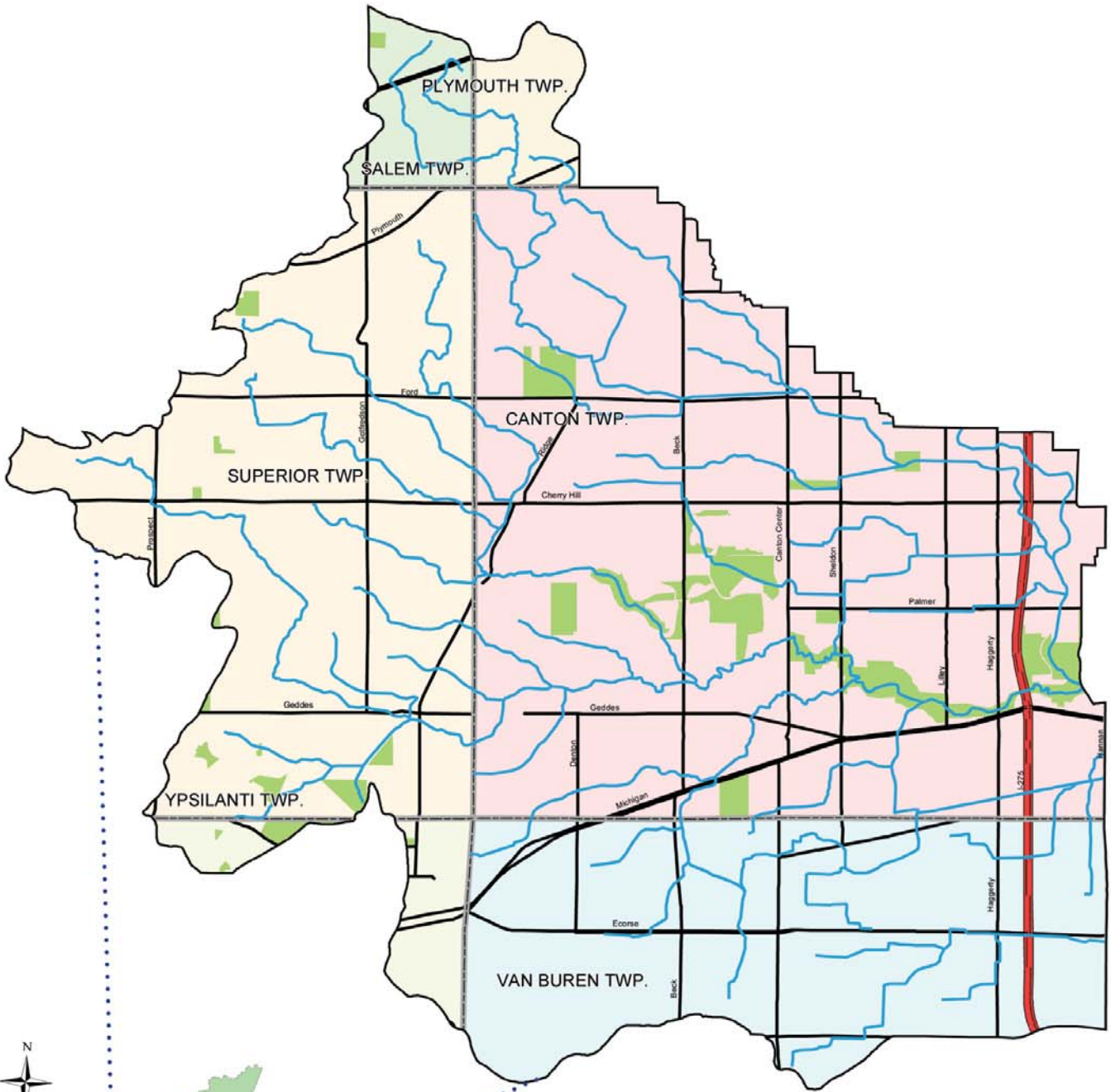


Rouge River Subwatershed

Lower 1

The Lower 1 Rouge River Subwatershed covers approximately 62.16 square miles or 39,785 acres of the Rouge River Watershed. The Lower 1 Rouge River Subwatershed makes up about 20% of the Rouge River Watershed and is located in western Wayne County and eastern Washtenaw County. It is comprised of parts of Canton Township, Plymouth Township, Salem Township, Superior Township, Van Buren Township and Ypsilanti Township. The Lower 1 Subwatershed is currently one of the most undeveloped in the Rouge River Watershed. Over 50% of the subwatershed remains in agricultural use, forested or in streams and wetland areas. The Lower 1 Subwatershed contains many tributaries including the Johnson Creek, Fellows Creek and Fowler Creek.



Demographics

Size: 62.16 square miles
 Population (2005): 84,207
 Miles of streams: 120
 Jurisdictions: Washtenaw and Wayne counties and 6 townships

Legend

- Rouge River & Tributaries
- Lake
- Highway
- County Road
- Recreation Area

Communities

- CANTON TWP.
- PLYMOUTH TWP.
- SALEM TWP.
- SUPERIOR TWP.
- VAN BUREN TWP.
- YPSILANTI TWP.

Land Use Category	Percentage of Total Drainage Area
Medium density residential	30%
Forest/rural open	22%
Agricultural	16%
Water/wetlands	9%
Industrial	7%
Commercial	6%
Urban open	4%
High density residential	3%
Highways	3%